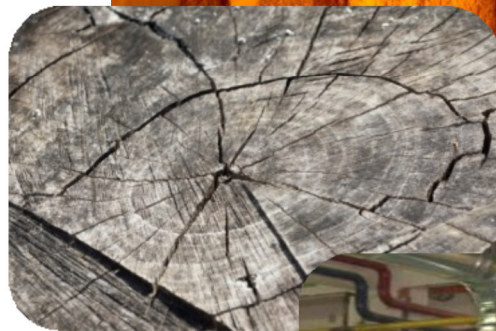
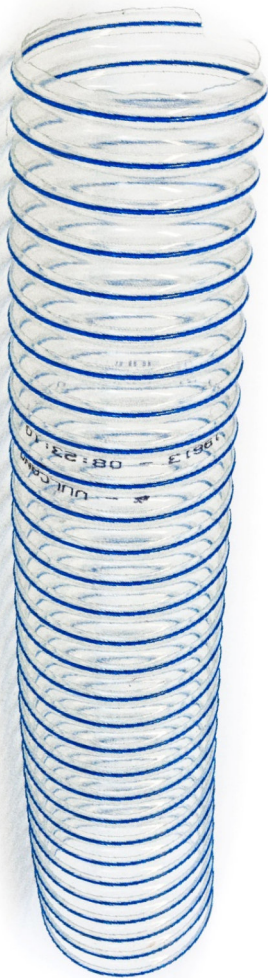


## Technical Data Sheet

### Vulcano Pu Light Blue Ducting

- Halogen free
- Light and flexible, it is especially suitable for dynamic applications
- Good abrasion resistance
- Inside completely smooth
- Used extensively in the woodworking, abrasive powders, ceramics and heating and ventilation industries.

Hose & Ducting



Certificate Number: 14362  
ISO 9001



UK GASKET & SEALING  
ASSOCIATION

Care should be taken in selecting the most suitable quality for each application. Advice is available, but final responsibility remains with the customer.

**Web: [www.epdm.co.uk](http://www.epdm.co.uk)**

**E-Mail: [Sales@epdm.co.uk](mailto:Sales@epdm.co.uk)**

#### Contact

Telephone: +44 (0)1625 573971

FAX: +44(0)1625 573250

PTM Ltd

Units AG2/3 Clarence Mill

Clarence Road, Bollington

Macclesfield, Cheshire

SK10 5JZ

United Kingdom

# Hose & Ducting

Part number	Ø Ins.	Min. wall thick	Weight	Vac.	Bending R.	Coil Length	Volume
	mm	mm	m/g	mH2O	mm	m	m³
RY 01 038.0 000.0	38	040	215	20	30	10/20	0,076
RY 01 051.0 000.0	51	040	275	20	40	10/20	0,108
RY 01 063.0 000.0	63	040	335	1,7	55	10/20	0,143
RY 01 076.0 000.0	76	0,43	400	1,7	65	10/20	0,245
RY 01 080.0 000.0	80	0,43	420	1,6	65	10/20	0,256
RY 01 090.0 000.0	90	0,43	470	1,6	75	10/20	0,303
RY 01 102.0 000.0	102	0,53	530	1,3	85	10/20	0,310
RY 01 110.0 000.0	110	0,53	570	1,2	90	10/20	0,320
RY 01 120.0 000.0	120	0,53	615	1,0	100	10/20	0,372
RY 01 127.0 000.0	127	0,53	620	1,0	105	10	0,405
RY 01 140.0 000.0	140	0,63	840	0,8	115	10	0,504
RY 01 152.0 000.0	152	0,63	890	0,8	125	10	0,544
RY 01 160.0 000.0	160	0,63	935	0,7	130	10	0,622
RY 01 180.0 000.0	180	0,63	1380	0,5	150	10	0,855
RY 01 203.0 000.0	203	063	1550	0,4	165	10	1,146
RY 01 228.0 000.0	228	063	1740	04	185	10	1,170
RY 01 254.0 000.0	254	0,65	1900	04	210	10	1,188
RY 01 305.0 000.0	305	0,65	2275	0,3	250	10	1,613
RY 01 305.0 000.0	315	0,65	2350	0,3	275	10	0,662



Certificate Number: 14362  
ISO 9001



Care should be taken in selecting the most suitable quality for each application. Advice is available, but final responsibility remains with the customer.

**Web: [www.epdm.co.uk](http://www.epdm.co.uk)**

**E-Mail: [Sales@epdm.co.uk](mailto:Sales@epdm.co.uk)**

#### Contact

Telephone: +44 (0)1625 573971

FAX: +44(0)1625 573250

PTM Ltd

Units AG2/3 Clarence Mill

Clarence Road, Bollington

Macclesfield, Cheshire

SK10 5JZ

United Kingdom