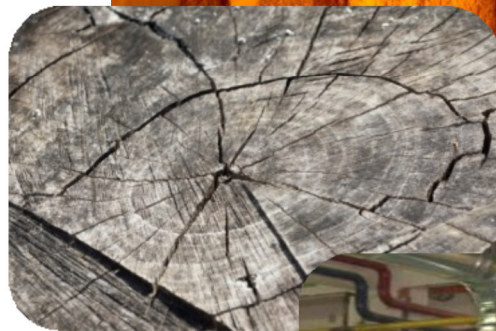


Technical Data Sheet

Vulcano Pu S-1

- ✓ Ester based TPU duct reinforced with a coppered steel spiral
- ✓ Constant wall thickness 0,4 mm for all the diameters
- ✓ Halogen free
- ✓ Very flexible and light weight
- ✓ Resistant to abrasion, mineral oils, ageing, ozone and atmospherical agents
- ✓ Compressible (Approx. 5:1) for ease of storage and transportation.

Hose & Ducting



Certificate Number: 14362
ISO 9001



Care should be taken in selecting the most suitable quality for each application. Advice is available, but final responsibility remains with the customer.

Web: www.epdm.co.uk

E-Mail: Sales@epdm.co.uk

Contact

Telephone: +44 (0)1625 573971

FAX: +44(0)1625 573250

PTM Ltd

Units AG2/3 Clarence Mill

Clarence Road, Bollington

Macclesfield, Cheshire

SK10 5JZ

United Kingdom

Hose & Ducting

Part number	Ø ins.	Min wall thick.	Weight	Bending R.	Vac.	Coil Length	Volume
	<i>mm</i>	mm	g/m	mm	m H2o	m	m3
W4 01 051.0 000.0	51	0,40	205	40	0,40	20	0,108
W4 01 060.0 000.0	60	0,40	235	50	0,40	20	0,137
W4 01 063.0 000.0	63	0,40	245	55	0,40	20	0,150
W4 01 065.0 000.0	65	0,40	255	56	0,40	20	0,162
W4 01 070.0 000.0	70	0,40	360	60	0,40	20	0,181
W4 01 076.0 000.0	76	0,40	390	65	0,40	20	0,232
W4 01 080.0 000.0	80	0,40	405	65	0,40	20	0,254
W4 01 090.0 000.0	90	0,40	455	75	0,40	20	0,294
W4 01 102.0 000.0	102	0,40	510	85	0,30	15	0,286
W4 01 110.0 000.0	110	0,40	550	90	0,30	15	0,318
W4 01 115.0 000.0	115	0,40	575	95	0,30	15	0,331
W4 01 120.0 000.0	120	0,40	595	100	0,25	15	0,369
W4 01 127.0 000.0	127	0,40	630	105	0,25	15	0,402
W4 01 130.0 000.0	130	0,40	645	105	0,20	15	0,424
W4 01 140.0 000.0	140	0,40	695	115	0,20	15	0,500
W4 01 152.0 000.0	152	0,40	750	125	0,20	15	0,541
W4 01 160.0 000.0	160	0,40	870	130	0,15	15	0,659
W4 01 180.0 000.0	180	0,40	975	150	0,15	15	0,846
W4 01 203.0 000.0	203	0,40	1100	165	0,10	15	1,140
W4 01 220.0 000.0	220	0,40	1190	185	0,10	10	0,898
W4 01 228.0 000.0	228	0,40	1230	185	0,10	10	0,929
W4 01 254.0 000.0	254	0,40	1370	210	0,10	10	1,184
W4 01 305.0 000.0	305	0,40	1640	250	0,08	10	1,613
W4 01 315.0 000.0	315	0,40	1695	275	0,07	10	1,664
W4 01 356.0 000.0	356	0,40	1910	300	0,07	on request	-
W4 01 406.0 000.0	406	0,40	2175	350	0,06	on request	-



Certificate Number: 14362
ISO 9001



Care should be taken in selecting the most suitable quality for each application. Advice is available, but final responsibility remains with the customer.

Web: www.epdm.co.uk

E-Mail: Sales@epdm.co.uk

Contact

Telephone: +44 (0)1625 573971

FAX: +44(0)1625 573250

PTM Ltd

Units AG2/3 Clarence Mill

Clarence Road, Bollington

Macclesfield, Cheshire

SK10 5JZ

United Kingdom